

Federal Network
of Vocational, Scientific
and Technological Education

An evolving innovation model



NATIONAL COUNCIL FOR THE FEDERAL NETWORK OF VOCATIONAL,
SCIENTIFIC AND TECHNOLOGICAL EDUCATION INSTITUTIONS



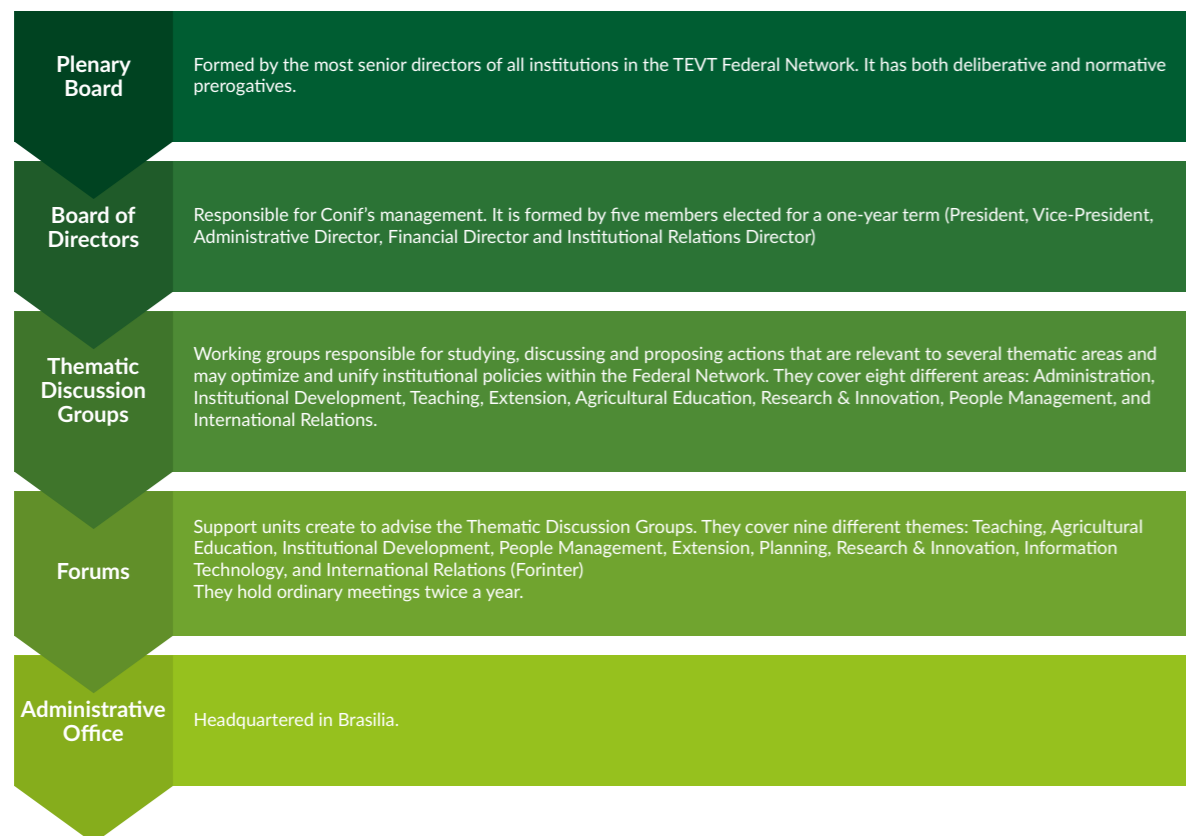
 **CONIF**
NATIONAL COUNCIL FOR THE FEDERAL NETWORK OF VOCATIONAL,
SCIENTIFIC AND TECHNOLOGICAL EDUCATION INSTITUTIONS

CONIF

The National Council of the Federal Network of Vocational, Scientific and Technological Education (Conif) focuses on the development, presentation and improvement of vocational and technological training, including agricultural teaching, research, innovation and extension.

Conif's goals are to value, strengthen and consolidate its 41 member institutions – 38 Federal Institutes of Education, Science and Technology, 2 Federal Centers for Technological Education (Cefets), and the Pedro II School – spread over 568 municipalities in all Brazilian federative units.

Organizational Structure



Mission: To strengthen Federal Network institutions through political coordination and representation initiatives aimed at enhancing vocational, scientific and technological education that is public, free, high quality and socially approved.

Vision: Conif will be nationally and internationally recognized as an advocate for innovative and inclusive vocational, scientific and technological education.

Core values: Unity, Democratic Management, Sustainability, Equity, Transparency, Ethics, and Solidarity.

As an important driver of Brazil's vocational and technological education model, Conif works in cooperation with several countries, including the Community of Portuguese Language Countries (CPLP). It is a partner of the Organization of Ibero-American States (OEI), and one of the representatives of the International Center for Technical and Vocational Education and Training (Unevoc) in Brazil.



The main actions in the international area are:

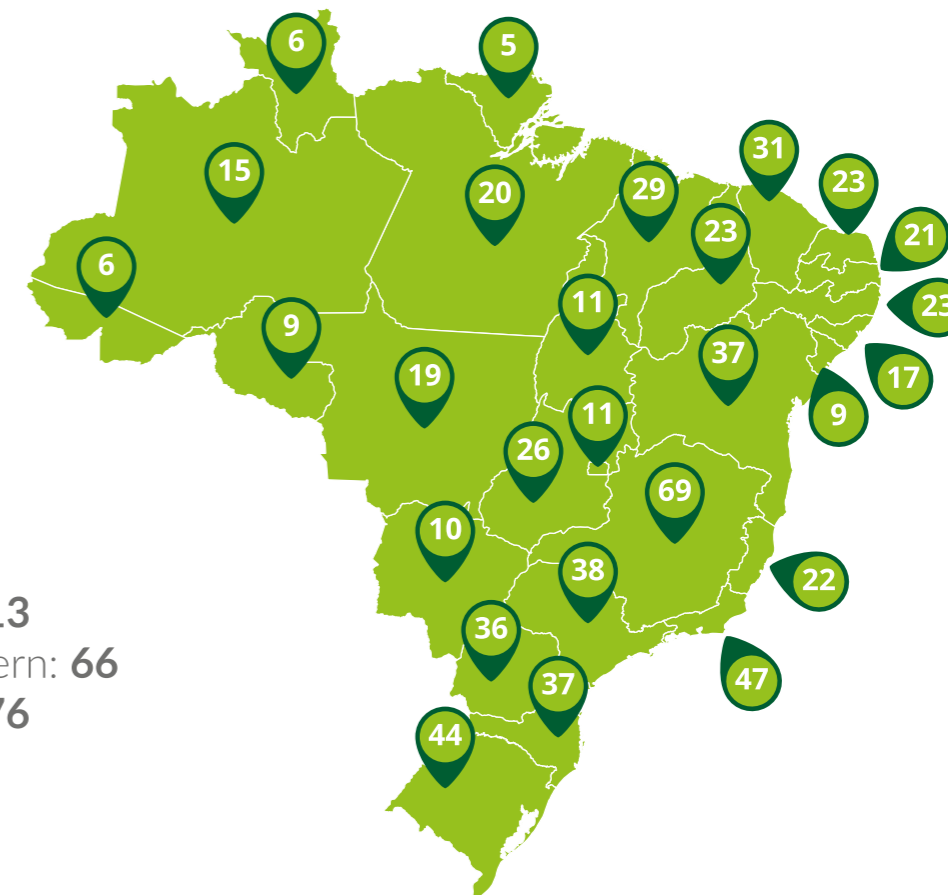
- Expanding academic, scientific and cultural cooperation
- Strengthening the integration of teaching, research, extension and internationalization
- Promoting mobility for staff and students
- Supporting the Federal Network's internationalization process
- Identifying potential and strategic partners
- Organizing international missions
- Participating in good-practice exchange forums
- Strengthening South-South cooperation
- Promoting integration between the Federal Network and international vocational education institutions
- Encouraging the teaching of Portuguese as an Additional Language (PAL)
- Stimulating the development of a Federal Network language policy
- Consolidating vocational education in border areas

Due to its strong inclusive potential, the Federal Network of Vocational, Scientific and Technological Education offers state-of-the-art vocational training at different levels – from basic education to postgraduate studies. The focus on regional development and on citizenship awareness-raising is present in more than 9,000 courses aimed at meeting the needs of local productive arrangements and bringing together vocational education, applied research, innovation and technology transfer.

Currently, 38 Federal Institutes of Education, Science and Technology, 2 Federal Centers for Technological Education (Cefets) and the Pedro II School integrate the Federal Network. Together, these institutions total 644 campuses spread in rural and urban areas all over Brazil. They have around 1 million students and employ 70,000 people, including faculty members and technical-administrative staff.

The Federal Network was founded in 1909. Its centennial experience is based on a contemporary and interactive approach, always compatible with current demands. Since 2002, with the strengthening of its internationalization policies, the Federal Network's practices and skills have spread around the globe. Currently, over 30 countries are engaged in cooperation with Brazilian institutions and experiencing its innovative and differentiated teaching model.

- 1909
Journeyman Apprenticeship Schools
- 1937
Professional Lyceums
- 1942
Industrial and Technical Schools
- 1959
Technical and Agro-technical Schools
- 1978
Federal Centers of Technological Education (Cefets)
- 2008
Federal Institutes of Education, Science and Technology



644 Units

North: **72**
Northeast: **213**
Central-western: **66**
Southeast: **176**
South: **117**

FEDERAL NETWORK **BENEFITS**

- Innovative and unique vocational and technological education model
- Inclusive potential
- Incentives to creativity, innovation and a vision of the future
- High levels of technology transfer applied to products and processes through technological extension programs
- Courses focused on the needs of local productive arrangements
- Training professionals of excellence through citizenship awareness
- Encouraging capacity building for staff
- Strong internationalization policy
- Policies that are consistent with promoting applied research, innovation and capacity building
- Present at all vocational and technological education levels
- Fifty per cent of all places reserved for secondary level technical students
- At least 20% of all places allocated to teacher training
- Around 30% of all places reserved for technology, bachelor's and engineering undergraduates, and for graduate students (master's and doctorates)
- Administrative, financial and didactic-pedagogical autonomy

AVAILABLE **PROGRAMS**

From elementary education to post-graduate studies, Federal Network institutions have a social commitment to offering free, public and state-of-the-art vocational education, including teacher training.

	LEVEL/QUALIFICATION	REQUIREMENTS	DURATION	
GRADUATE	Strictosensu	Undergraduate degree	2-4 years	
	Latosensu	Undergraduate degree	1 year	
UNDERGRADUATE	Bachelor's degree	Secondary school diploma	4 years	
	Technologist	Secondary school diploma	2-3 years	
	Engineering	Secondary school diploma	5 years	
TEACHING LICENSE	Teaching degree	Secondary school diploma	4 years	
TECHNICAL	Integrated (vocational education together with secondary school)		Middle school certificate	3-4 years
	Subsequent (for students who have finished secondary school)		Secondary school diploma	1-2 years
	Proeja (basic education together with secondary education)	Technical	Middle school certificate	3 years
		Initial and continued education	Elementary school certificate	up to 2 years
INITIAL AND CONTINUED EDUCATION	Focused on raising workers' professional skills and schooling levels			

FEDERAL NETWORK **FACTS AND FIGURES**

POST-GRADUATION PROGRAMS

Most of the Federal Network's Master's and Doctoral programs are professionally-focused, so as to meet the needs of local productive arrangements.

435

778,686

STUDENTS ENROLLED

In face-to-face and long-distance programs.

110

SCIENTIFIC JOURNALS

Scientific journals contribute to developing research in vocational and technological education.

8,114

PUBLICATIONS

The number of articles published in 2016 grew around 21% compared to 2015.

11,028

APPLIED RESEARCH PROJECTS

Promote the improvement of products, services and processes, and thus enable studies to be effectively implemented.

TECHNICAL-SCIENTIFIC EVENTS

The Federal Network promotes activities that contribute to the expansion of knowledge all over Brazil.

793

STAFF

38,906 faculty members, and 32,863 technical-administrative staff.

382

FILED PATENTS

Over the past three years, the Federal Network saw a significant increase in the number of patents filed. While in 2015 only 25 requests were filed, in 2016 this number grew to 75.

TECHNOLOGICAL EXTENSION PROJECTS

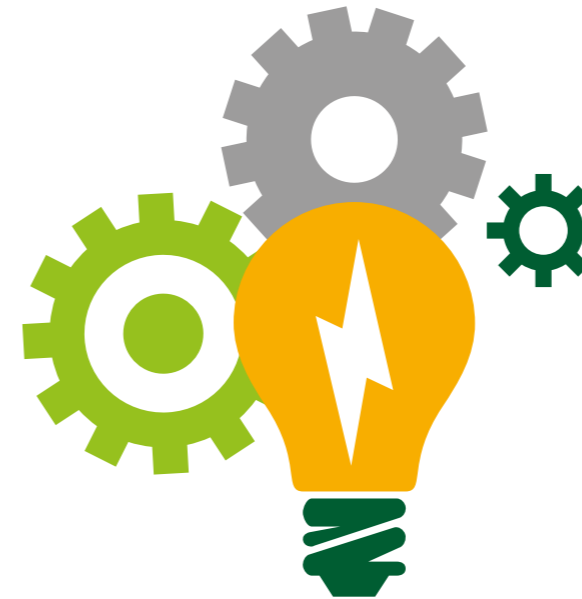
Enable institutions to go beyond the teaching environment and bring their research to society, sharing knowledge and changing lives.

5,979

TECHNOLOGICAL EDUCATION AREAS

Environment and Health	Food Production
Industrial Processes and Control	Cultural Production and Design
Social and Educational Development	Industrial Production
Business and Management	Natural Resources
Information and Communication	Safety and Security
Infrastructure	Tourism, Hospitality and Leisure

INNOVATION PARKS



In order to increase Brazil's industrial competitiveness and productivity, the Federal Network has five Innovation Hubs that focus on the development of applied research, and will create several others starting in 2018. These units are formed by laboratories operated in partnership with the Brazilian Agency for Industrial Research and Innovation (Embrapii).

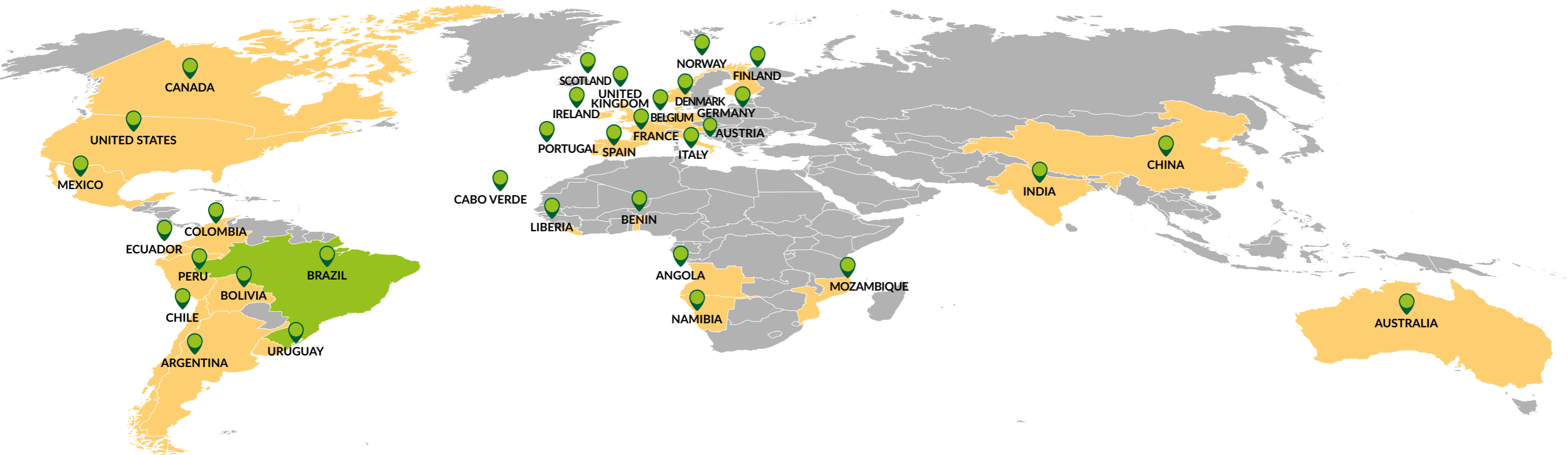
Projects are carried out by students, teachers, industry professionals and researchers in Brazil and around the world.

FEDERAL INSTITUTE	SEGMENT
Bahia	Medical equipment
Ceará	Embedded systems and digital mobility
Espírito Santo	Metallurgy and materials
Fluminense	Environmental monitoring and instrumentation
Minas Gerais	Smart automotive systems

THE FEDERAL NETWORK IN THE WORLD

Federal Network institutions have partnerships with over 30 countries, developing specific projects such as capacity building programs for staff, research enhancement, and cultural

and academic exchange programs. Thus, in cooperation with the world, Brazil promotes higher quality vocational education by sharing knowledge and good practices.



INSTITUTIONS

Acre

www.ifac.edu.br

Alagoas

www.ifal.edu.br

Amapá

www.ifap.edu.br

Amazonas

www.ifam.edu.br

Bahia

www.ifba.edu.br

Baiano

www.ifbaiano.edu.br

Brasília

www.ifb.edu.br

Catarinense

www.ifc.edu.br

Ceará

www.ifce.edu.br

Cefet – Minas Gerais

www.cefetmg.br

Minas Gerais

www.ifmg.edu.br

Cefet – Rio de Janeiro

www.cefet-rj.br

Colégio Pedro II (RJ)

www.cp2.g12.br

Espírito Santo

www.ifes.edu.br

Farroupilha

www.iffarroupilha.edu.br

Fluminense

www.iff.edu.br

Goiano

www.ifgoiano.edu.br

Goiás

www.ifg.edu.br

Mato Grosso

www.ifmt.edu.br

Mato Grosso do Sul

www.ifms.edu.br

Maranhão

www.ifma.edu.br

Roraima

www.ifrr.edu.br

Norte de Minas

www.ifnmg.edu.br

Pará

www.ifpa.edu.br

Paraíba

www.ifpb.edu.br

Paraná

www.ifpr.edu.br

Pernambuco

www.ifpe.edu.br

Piauí

www.ifpi.edu.br

Rio de Janeiro

www.ifrj.edu.br

Rio Grande do Norte

www.ifrn.edu.br

Rio Grande do Sul

www.ifrs.edu.br

Rondônia

www.ifro.edu.br

Santa Catarina

www.ifsc.edu.br

São Paulo

www.ifsp.edu.br

Sergipe

www.ifs.edu.br

Sertão Pernambucano

www.ifsertao-pe.edu.br

Sudeste de Minas Gerais

www.ifsudestemg.edu.br

Sul de Minas Gerais

www.ifsuldeminas.edu.br

Sul-rio-grandense

www.ifsul.edu.br

Tocantins

www.ifto.edu.br

Triângulo Mineiro

www.iftm.edu.br



NATIONAL COUNCIL FOR THE FEDERAL NETWORK OF VOCATIONAL,
SCIENTIFIC AND TECHNOLOGICAL EDUCATION INSTITUTIONS

www.conif.org.br

conif@conif.org.br

+55 61 3966.7201

 [@conif.org](https://www.facebook.com/conif.org)

 [@conif_conif](https://twitter.com/conif_conif)

 [conif.org](https://www.youtube.com/conif.org)

 [conif](https://www.instagram.com/conif)

